



2025

**RED WHITE AND
BEAUTIFUL**

Fleckvieh Female Sale

B

BOYLE RANCH

Welcome!

We are excited to be hosting our 4th Red, White and Beautiful Fleckvieh Female sale. I want to start off by saying a huge thank you to all our past buyers and bidders. We strive to make our customers our number one priority. We are in our tenth year of raising registered Fleckvieh and Fullblood Simmentals and boy does time sure fly! I will always remember the day the first cows showed up in early spring of 2015. We have been using Fleckvieh bulls for 13 years but made the leap to raising registered stock in 2015. For us the push to promote the breed was the females we were keeping from those first Fleckvieh bulls, the daughters were outperforming their mothers! This journey of raising and marketing breeding stock has been an absolute joy. We have cattle in 2 countries and multiple states from Oregon to Florida. I always joke that even if we weren't raising registered stock, we would still be using Fleckvieh on our ranch. We just love their versatility and adaptability to different environments. We used Southseven Polled Perfection and CFFS Balboa 409D as AI Sires this year. We had the bred heifers live covered by herdsire Fitz Flec PFF Mack K1201, Mack is a FSS Maximus son, and we are excited about his calves that have been hitting the ground this fall!



We have really focused on making females that are going to go out and be productive for their new owners. As we continue to use more outcrosses to our genetics, one thing has always been a focus for us, making moderate cows that stay productive for a long time (as well as having pleasant dispositions). Thank you for your interest in our 2025 female offering, I am truly grateful for the opportunity to raise these cattle and share them with the industry.

Thank you,

Bryan Boyle



Follow us on to stay current!



Sale Details

We are excited to be offering 2 bred heifers, 1 bred cow and 16 open heifers this year to our customers via a private treaty, online auction. The auction will begin Nov. 14th at 8:00 am and end Nov. 16th at 6:00 pm, central time. All lots will extend for 5 minutes once a bid is placed in the last 5 minutes of the auction. Please visit the auction website to register for an account in order to bid: auctions.boylerranchfleckvieh.com

Cattle were pictured on October 18, 2025 for the catalog.

Sale Terms

- Check or Wire Transfer
- All heifers must be paid for within two weeks.
- Breeding Fee for the keep them and breed them program will be \$600 for confirmed pregnant at 90 days after service for cover bull (Mack) and feed, additional fees will be applied for AI, semen, synchronization, etc. if buyer chooses to artificial inseminate.
- All heifers will be health checked and have certificates from Marcus Vet Clinic. Heifers were ultrasounded by Dr. Tabke of the Marcus Vet Clinic.
- Open heifers will be Calhooed vaccinated
- Every purchase of a heifer will be granted a \$150 credit at our next bull sale in March 2026.

Catalog

KtK Livestock Services, LLC. Katie Keller. 402-389-2127

About The Breed

Fleckvieh cattle are known for their maternal calving ease, efficient growth, cow longevity, milk quality and performance in the feedlot and on the rail. Here at Boyle Ranch we believe Fleckvieh cattle bring value to every sector of the cattle market with great weaning weights for the feeder calf producer, great maternal characteristics for the replacement heifer market, and also their ability to convert in the feedyard and dollar up on the rail.

Delivery

Shipping is free within 250 miles from our ranch here by Washta, IA. \$3/per loaded mile after that. \$100 discount if you come to our place within a week and pick up the heifer. Deliveries will be made by December 31.

Buyer is responsible for any additional fees regarding shipping.

Bryan and Brittany Boyle

Washta, Iowa

712-870-8666

boyle_bryan@yahoo.com

www.boylerranchfleckvieh.com



Bred Heifers- Lots 1 and 2

BOYLE RANCH MISSY

AI Bred To: Polled Perfection on 6/2/25

Live Covered By: Fitz Flec PFF Mack K1201
From 6/14/25 to 9/15/25

Pregnancy Status: Confirmed Pregnant
10/1/25 approximately 120 days

Reg. #	4586266
Tattoo	401M
DOB	3/11/24
BW	89 lbs.

Individual Data
Purebred Simmental
Horned
Diluter Free

SUNNY VALLEY SARGENT 24S
GOLDEN DAWN SARG
CFFS HACKS KERSTIN 526E
OAKVIEW TITAN 20Y
BOYLE RANCH HAVANAH
BOYLE RANCH DARLENE

CE	BW	MCE	MILK	MWW	STAY	DOC	API
6.5	4.1	2.2	37.7	73.8	16.9	4.4	110
95	95	99	1	10	35	99	90

Breed %

Starting Bid: \$5,000



Missy is a really special heifer from our program. We really have had great luck with her cow line that goes back to some of our original set of cows we got from a great Canadian operation, Keet Simmentals. Missy holds purebred status within the herdbook from a cow way back in her pedigree, but she is high percentage Fleckvieh. We absolutely love the job her mother. They always hold condition and do a great job of raising big soggy calves. She should be confirmed to AI to Polled Perfection as well!

402M

AI Bred To: CFFS Balboa 409D on 6/2/25

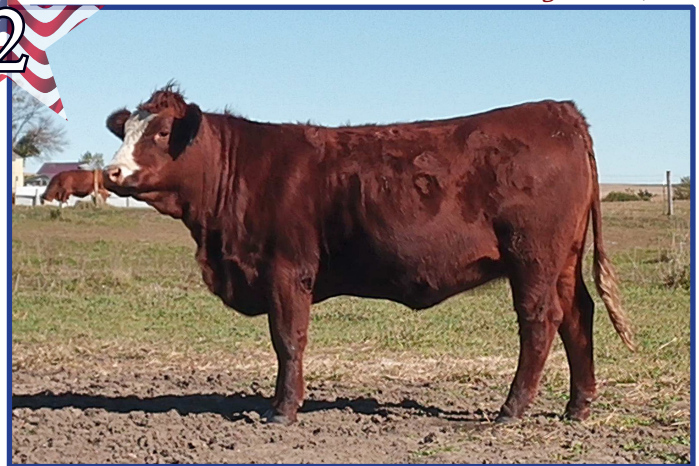
Live Covered By: Fitz Flec PFF Mack K1201
From 6/14/25 to 9/15/25

Pregnancy Status: Confirmed Pregnant
10/1/25 approximately 120 days

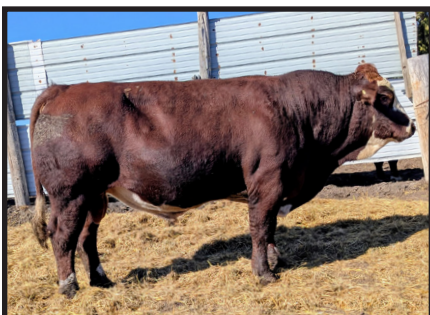
Reg. #	Commercial
Tattoo	402M
DOB	3/11/24
BW	76 lbs.

Individual Data
Commercial Fleckvieh
Polled
Diluter Free

Starting Bid: \$4,000



402M is a super sweet polled heifer, if I could make an ideal commercial herd I would replicate 402M for the entire thing! She is deep, dark red and a fantastic disposition with the proven performance of four generations of good cows I have had in production myself. Her Maternal brother that was just weaned is in the top third of the calf crop for sure!



Fitz Flec PFF Mack K1201
Live Cover Bull Power

BOYLE RANCH GYPSY

Live Covered By: Pasture Exposed

Golden Dawn Arno 5/1/25- 6/25/25;

Pasture exposed Boyle Ranch Deadwood 6/28/25-9/15/25

Pregnancy Status: Confirmed pregnant

approximately 140 days 10/1/25

Reg. #	3997379
Tattoo	10BG
DOB	5/25/19
BW	lbs.
Individual Data	
Polled	

BOYLE RANCH CADILLAC
BOYLE RANCH EDGAR
BOYLE RANCH CADILLAC

EXODUS
KEET'S BAMBI 10B
KEET'S UNIVER 40U

CE	BW	MCE	MILK	MWW	STAY	DOC	API
3.8	6.3	0.1	33.8	70	14.1	10.6	97.2
75	85	90	45	45	60	40	70

Breed %

Bred Cow

Starting Bid: \$5,000



Gypsy has done a phenomenal job for us since we have had her in our herd. Her sons and daughters have gone out to different operations with great feedback. She is out of our 10B cowline that also came from Keet Simmentals back in the day. I contemplated putting her on the sale at all, but we have some exciting things coming up in introducing new bloodlines and decided to offer her to the public. Her bull calf in the yard is an absolute powerhouse.

Open Heifers- Lots 4-19

BOYLE RANCH MELODY

Sells Open

Reg. #	4586267
Tattoo	403M
DOB	8/25/24
BW	79 lbs.
Individual Data	
Full Fleckvieh	
Horned	
Diluter Free	

GOLDEN DAWN TALLADEGA
GOLDEN DAWN ARNO
KUZ MISS MOLSON 170B

SOUTH SEVEN TOPNOTCH 29T
GOLDEN DAWN MERCEDES
BLUE-SPRUCE MERCEDES 30M

CE	BW	MCE	MILK	MWW	STAY	DOC	API
4.3	4.6	2.2	31.9	64.9	15.4	5.2	101.2
70	45	70	65	80	40	95	55

Breed %



Starting Bid: \$3,200

Sells open. Melody is out of one of the original 5 Fleckvieh cows we started with way back in 2015. Melody has the look of being a long-term staple in anyone's breeding program. Arno's daughters have done nothing but impress me since we have had him around. He passes on good temperament and great feet and structure to his offspring.



BOYLE RANCH MAUDE

Sells Open

Reg. #	4586269
Tattoo	406M
DOB	9/2/24
BW	81 lbs.

Individual Data
Full Fleckvieh
Horned
Diluter Free

CE	BW	MCE	MILK	MWW	STAY	DOC	API
5.8	4.7	2.3	36.1	70.9	13.1	4.1	97.6
50	50	65	20	40	7	99	65

Breed %

SUNNY VALLEY SARGENT 24S
GOLDEN DAWN SARG
 CFFS HACKS KERSTIN 526E
 WNLP USHER 32U
BOYLE RANCH GWEN
 BOYLE RANCH DESTINY

5



Starting Bid: \$3,500

Sells open. Maude is a heck of an open heifer. Her dam has done such a great job for us, she currently has a whopper of a Mack calf on her side. Sarg's daughters have been super impressive as well. They stay moderate framed and produce great calving ease progeny.

BOYLE RANCH MIA

Sells Open

Reg. #	4586270
Tattoo	407M
DOB	8/5/24
BW	80 lbs.

Individual Data
Full Fleckvieh
Horned
Diluter Free

CE	BW	MCE	MILK	MWW	STAY	DOC	API
10.4	1.9	65	38.4	70.8	15.7	3.3	114.4
10	10	85	10	40	35	99	15

Breed %

SUNNY VALLEY SARGENT 24S
GOLDEN DAWN SARG
 CFFS HACKS KERSTIN 526E
 KEET'S ZYTAVEON 8Z
BOYLE RANCH DELILA
 KEET'S XAYNAH 49X

6



Starting Bid: \$3,500

Sells open. Mia is another Sarg daughter out of an outstanding polled cow we have in the herd. Mia has excellent Calving Ease numbers with a great API index in the top 15 percent of the breed. We have multiple sisters in the herd that have produced sale topping bulls in the past.

BOYLE RANCH MARGE

Sells Open

Reg. #	4586274
Tattoo	412M
DOB	8/2/24
BW	94 lbs.

Individual Data
Full Fleckvieh
Horned
Diluter Free

CE	BW	MCE	MILK	MWW	STAY	DOC	API
3.2	6.3	1.3	31.8	67	16.3	8.5	97.8
80	85	80	70	65	30	75	65

Breed %

GOLDEN DAWN TALLADEGA
GOLDEN DAWN ARNO
 KUZ MISS MOLSON 170B
 BAR 5 SA PIONA 04 817N
CFFS FIONA 683F
 CFFS SASSY 210B

7



Starting Bid: \$3,500

Marge is an excellent Arno daughter with a cool pedigree. She blends some old school Piona into the mix. She has a good Stayability EPD and that is no surprise, all the Talladega (Arno's Sire) daughters have stayed in our herd for over 10 years with good production.

BOYLE RANCH MADISON

Sells Open

Reg. #	4586275
Tattoo	413M
DOB	8/1/24
BW	80 lbs.

Individual Data
Full Fleckvieh
Horned
Diluter Free

SUNNY VALLEY SARGENT 24S
GOLDEN DAWN SARG
 CFFS HACKS KERSTIN 526E
 CFFS BALBOA 409D
BOYLE RANCH GERTRUDE
 BOYLE RANCH EMILY

CE	BW	MCE	MILK	MWW	STAY	DOC	API
9.7	2	5	37.3	67.6	15.6	5.8	110.4
15	10	25	15	60	40	95	20

Breed %



Starting Bid: \$4,000

If you are looking for the next calving ease bull maker, look no further than Madison! I think with herd expansion and heifer retention right around the corner in the cattle cycle, calving ease bulls will be in high demand. Madison's mother is a sweet little Balboa daughter that just does her job consistently. Madison is going to stay moderate framed and easy fleshing, both attributes of Sarg and Balboa progeny. She also has a high API index.

BOYLE RANCH MARY

Sells Open

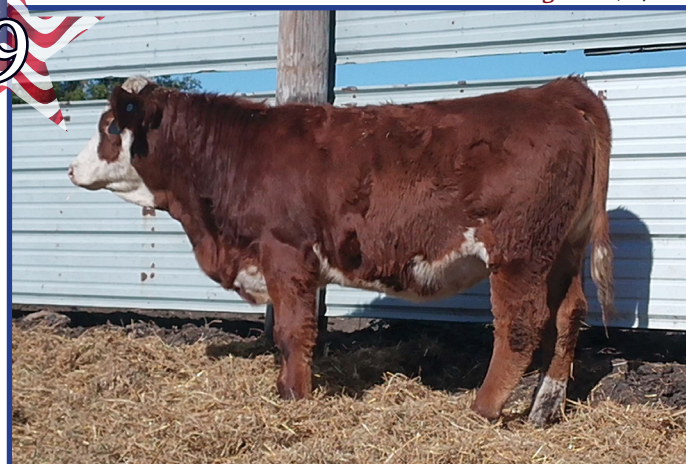
Reg. #	4585276
Tattoo	415M
DOB	8/25/25
BW	86 lbs.

Individual Data
Full Fleckvieh
Horned
Diluter Free

SUNNY VALLEY SARGENT 24S
GOLDEN DAWN SARG
 CFFS HACKS KERSTIN 526E
 CROSSROAD RADIUM 78
BOYLE RANCH MS RADIUM
 KEET'S BLOSSOM 55B

CE	BW	MCE	MILK	MWW	STAY	DOC	API
8.0	4.2	4.9	34.1	68.6	14.1	9.8	99.0
25	40	25	40	55	60	55	60

Breed %



Starting Bid: \$4,000

Mary is a unique heifer in our offering this year. She is out of a Crossroad Radium daughter that has been a great producer for us. She has an above average calving ease and Maternal calving ease. Her great Grandmother was Shaw acres Rose, who was productive well into her later years of life. We were fortunate to pick up a Rose daughter from Stanley Martins that led us down the path to Boyle Ranch Ms. Radium, Mary's dam, who has been outstanding.



BOYLE RANCH MABEL

Sells Open

Reg. #	4586277
Tattoo	416M
DOB	8/15/24
BW	80 lbs.

Individual Data
Full Fleckvieh
Horned
Diluter Free

CE	BW	MCE	MILK	MWW	STAY	DOC	API
9.4	2.4	4	34.5	68.3	11.8	8.9	106.2
15	10	35	35	60	90	70	35

Breed %

SUNNY VALLEY SARGENT 24S
GOLDEN DAWN SARG
 CFFS HACKS KERSTIN 526E
 FSS POLLED HENDRIX
BOYLE RANCH JAYLA
 BOYLE RANCH GISABELLE



Starting Bid: \$4,500

Mabel has been a standout since she hit the ground last fall. We think highly of her mother Boyle Ranch Jayla and believe she is Donor pen material. Mabel has the same capabilities for sure! Having Hendrix in her pedigree should speak for itself for the impact he has had in the Fleckvieh industry both in the US and Canada. Take Mabel home and let her make \$\$\$\$\$ for you!

BOYLE RANCH MITZI

Sells Open

Reg. #	4586268
Tattoo	405M
DOB	8/1/24
BW	90 lbs.

Individual Data
Fullblood Simmental
Horned
Diluter Free

CE	BW	MCE	MILK	MWW	STAY	DOC	API
3.1	5.5	3.5	33.5	70.2	15.2	10.6	99.1
80	70	45	50	45	45	40	60

Breed %

BRINK Z276
BOYLE RANCH FERRARI
 KUZ MISS MAESTRO
 WYVERN MAGNIFICENT
GOLDEN DAWN MAGGIE
 SHAWACRES ROSE 8R



Starting Bid: \$3,250

Mitzi is out of a great cow that is a daughter of Wyvern Magnificent. She is a Fullblood with a very High percent Fleckvieh. Ferrari did such an amazing job for us when he walked our pasture, and his legacy is still at work with his daughters. He always passed great feed efficiency into his offspring.

BOYLE RANCH MARIA

Sells Open

Reg. #	4586272
Tattoo	409M
DOB	8/11/24
BW	85 lbs.

Individual Data
Fullblood Simmental
Polled
Diluter Free

CE	BW	MCE	MILK	MWW	STAY	DOC	API
6.7	4.1	2.8	37.2	72.9	15.2	6.8	107.2
40	35	60	15	30	45	90	30

Breed %

SUNNY VALLEY SARGENT 24S
GOLDEN DAWN SARG
 CFFS HACKS KERSTIN 526E
 BOYLE RANCH FERRARI
BOYLE RANCH HARMONY
 BOYLE RANCH KONA



Starting Bid: \$3,500

My Maria! She is a sweet dispositioned heifer that goes back to Brittany's favorite cow Boyle Ranch Kona. Maria is deep cherry red and polled as well. She is going to be a moderate framed heifer with proven pedigree to make well muscled easy doing progeny. Year after year we get excellent feedback from the Sarg progeny and what they do out in the country.

BOYLE RANCH MADELINE

Sells Open

Reg. #	4586271
Tattoo	408M
DOB	8/14/24
BW	82 lbs.
Individual Data	
Purebred	
Polled	
Diluter Free	

BRINK Z276
BOYLE RANCH FERRARI
 KUZ MISS MAESTRO
 VIRGINIA U2 46U
KEET'S B'ETOR 20B
 KEETS ROWENA 21R

CE	BW	MCE	MILK	MWW	STAY	DOC	API
2.5	6	1.7	33.9	71	15	12.2	101.2
99	99	99	4	20	55	45	99

Breed %



Starting Bid: \$3,500



Madeline is another descendent of the 21 cow line we mentioned in the Bred heifer segment. She is gentle and long bodied with plenty of muscle. We absolutely loved her mother when she walked our pastures. She holds purebred status but it's easy to see she has as much Fullblood Simmental as any other heifer on the continent. I think for the producer looking for a dang good polled heifer, Madeline checks the boxes for a brood cow candidate.



13FM

Sells Open



Tattoo	13FM
DOB	8/1/24
BW	78 lbs.
Individual Data	
Comercial Heifer	
Horned	
Diluter Free	

Sired By: GOLDEN DAWN SARG
 Starting Bid: \$2,800



8EM

Sells Open



Tattoo	8EM
DOB	8/22/24
BW	88 lbs.
Individual Data	
Comercial Heifer	
Horned	
Diluter Free	

Sired By: GOLDEN DAWN SARG
 Starting Bid: \$2,800



**13HM***Sells Open*

Tattoo	13FM
DOB	9/9/24
BW	80 lbs.
Individual Data	
Comercial Heifer	
Polled	
Diluter Free	

Sired By: BOYLE RANCH DEADWOOD
 Starting Bid: \$2,800

**8HM***Sells Open*

Tattoo	8HM
DOB	8/22/24
BW	78 lbs.
Individual Data	
Comercial Heifer	
Horned	
Diluter Free	

Sired By: GOLDEN DAWN SARG
 Starting Bid: \$2,800

**BOYLE RANCH**

Every purchase of a heifer will be
 granted \$150 credit towards this
 Bull Sale!

10

YEAR ANNIVERSARY

**GROWTH****PERFORMANCE****LONGEVITY****Online Auction***March 20-22, 2026*Online Bidding: auctions.boylerranchfleckvieh.com



Sired By: BOYLE RANCH DEADWOOD
Starting Bid: \$2,800

Tattoo	8JM
DOB	12/6/24
BW	79 lbs.
Individual Data	
Comercial Heifer	
Horned	
Diluter Free	

Consignment Lots: COMING SOON!

Why Fleckvieh?

We began using Fleckvieh in our commercial operation 13 years ago, and we became believers! We were looking to increase our weaning weights and build more efficient females. That is why we believe in the Fleckvieh breed they are a dual purpose breed that will put quality meat on the bone while still having the milk and maternal characteristics that cattlemen strive for.

Calves sired by Fleckvieh bulls reach market weight faster than their Angus sired counterparts on the same diet.

They convert their feed more efficiently and yield better.

Which means more dollars made per calf with the same resources!

Reference Sires



GOLDEN DAWN ARNO

Reg #: 3938352
Tattoo: 170G
DOB: 11/05/2019
Adj. BW: 92 lbs
Adj. WW: 817 lbs

TRI-R TALLADEGA 24T
GOLDEN DAWN TALLADEGA
MFI LOLITA 7155
SMITHBILT MOLSON 21M
KUZ MISS MOLSON 170B
KUZ MISS IMPACT 120P

CE	BW	WW	YW	ADG	Milk	Doc	CW	Marb	Fat	REA
5.8	5.8	69.2	89.9	0.13	33.4	5.9	12.7	-0.03	-0.096	0.71



BOYLE RANCH FERRARI

Reg #: 3533307
Tattoo: 156F
DOB: 2/15/2018
Adj. BW: 85 lbs
Adj. WW: 735 lbs

BRINK AMBROSE X038
BRINK Z276
BRINK MISS RINGO S619
DOUBLE BAR D MAESTRO 100S
KUZ MISS MAESTRO
KUZ MISS COLOSSAL 428Z

CE	BW	WW	YW	ADG	Milk	Doc	CW	Marb	Fat	REA
2.8	4.9	73.5	98.5	0.16	34.9	10.4	26.3	-0.02	-0.12	0.96

He is a heterozygous polled fullblood that we raised ourselves out of a Double Bar D Maestro daughter. He has always been an eye catcher with great pigment and length of spine. We are just getting started with ferrari and we really think he will be an all around herd improving herdsire.



GOLDEN DAWN SARG

Reg #: 3676461
Tattoo: 526G
DOB: 3/02/2019
Adj. BW: 93 lbs
Adj. WW: 693 lbs

DFM MARCUS 14M
SUNNY VALLEY SARGENT 24S
MTV BECKY
HACKENBERG
CFFS HACKS KERSTIN 526E
MS JMC KERSTIN K404

CE	BW	WW	YW	ADG	Milk	Doc	CW	Marb	Fat	REA
9.4	2.5	68.1	91.5	0.15	39.9	2.6	30.2	-0.07	-0.123	1.19

Golden Dawn Sarg has been a tremendous calving ease specialist for us. We acquired him from Stanley martins a few years back when we needed an outcross to Balboa for our heifers. Being a direct son of Sunny Valley Sargent he has moderate frame and calving ease with lots of muscle and deep red pigment. I'm excited to see sarg's daughters when they get into production.

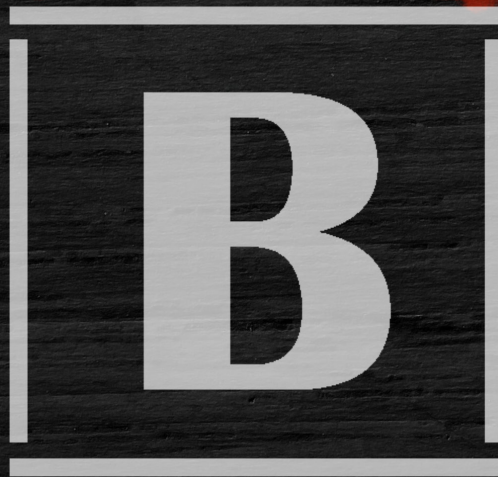


BOYLE RANCH DEADWOOD

Reg #: 4235721
Tattoo: 32DG
DOB: 3/13/2019
Adj. BW: 91 lbs
Adj. WW: lbs

MF MR. EVAN 14P
CROSSROAD RADIUM 789U
CROSSROADS PANDITA 308P
BEE VORTEX 12A
BOYLE RANCH KONA
KEET'S BILOXI 32B

CE	BW	WW	YW	ADG	Milk	Doc	CW	Marb	Fat	REA
9.9	3.2	68.7	91.6	0.14	36.7	14.9	18.1	-0.2	-0.128	0.8



BOYLE RANCH